

What is an appellation? A geographical area and a state of mind. A set of soil, weather and terrain conditions which determines the unique character of the grapes, and the wine made from them. An appellation designation on a wine label tells the buyer that the wine was made from grapes grown within the legal boundaries of that area.

What is the Puget Sound Appellation? Contrary to popular belief, Puget Sound country is not perpetually rain-drenched and overcast. The great uplifted mass of the Olympic Mountains and Vancouver Island shield the inner coastline from storms. The critical growing season is in fact drier than the classic wine regions of Europe. The Vashon glacier deposited a generously ground-down mixture of granite, schist, gneiss and sandstone as a gravelly sandy loam. Ideal for grape growing, these soils are well drained and deep enough to act as a reservoir for winter moisture, limiting the need for irrigation. Rarely does the thermometer drop below freezing or climb above 90°. The northerly latitude, like France and Germany, makes for long hours of sunlight throughout the growing season. In short, the Puget Sound Appellation enjoys unique climate and soil conditions that make it a natural for growing wine.

Lopez Island Vineyards



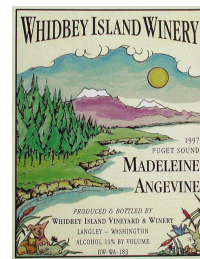
—PUGET SOUND—
Estate Organically Grown Grapes

1 Established 1987. Family-owned and operated winery producing Madeleine Angevine, Siegerrebe, as well as Chardonnay, Merlot and Cabernet Sauvignon/Merlot from grapes grown in eastern Washington appellations.

724 Fisherman Bay Road; Lopez Island, WA 98261
(360) 468-3644

www.lopezislandvineyards.com

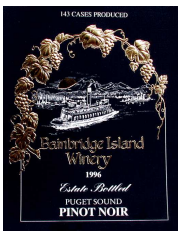
Winemaker: Brent Charnley



4 Established 1986. Family-owned and operated winery producing Madeleine Angevine, Siegerrebe, Madeleine Sylvaner (blended with Angevine in an "Island White") – as well as a range of wines including Chardonnay, Cabernet Sauvignon, Merlot and Syrah from eastern Washington appellation grapes.

5237 Langley Road; Langley, WA 98260; (360) 221-2040
www.whidbeyislandwinery.com

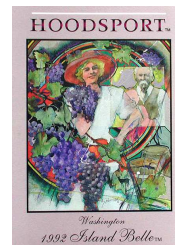
Winemaker: Greg Osenbach



2 Established 1977. Family-owned and operated winery producing all estate grown Madeleine Angevine, Pinot Gris, Siegerrebe, Pinot Noir, Muller-Thurgau and dessert wines.

682 State Hwy 305; Bainbridge Island, WA 98110
(206) 842-WINE

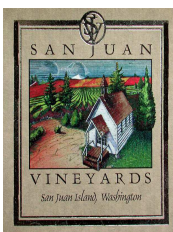
Winemaker: Gerard Bentryn



5 Established 1978. Family-owned and operated winery unique in producing wine from the Island Belle grape, and an extensive list which has included Muller-Thurgau and Madeleine Angevine and now features appellation and eastern Washington wines and award-winning fruit wines.

23501 N. Hwy 101; Hoodsport, WA 98548; (360) 877-9894
www.hoodsport.com

Winemaker: Dick Patterson

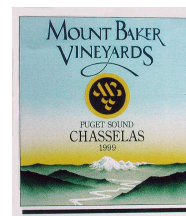


3 Established 1996. Family owned and operated winery producing Madeleine Angevine and Siegerrebe as well as Chardonnay, Merlot, Cabernet Sauvignon and Riesling from grapes grown in eastern Washington appellations.

3136 Roche Harbor Road; Friday Harbor, WA 98250
(360) 378-9463

www.sanjuanvineyards.com

Winemaker: Michael Carr



6 Established 1978. Family-owned and operated winery producing wines from Madeleine Angevine, Siegerrebe, Chasselas, Pinot Noir, Pinot Gris and Muller-Thurgau as well as a range of wines from eastern Washington appellation grapes.

4298 Mt. Baker Hwy; Everson, WA 98247; (360) 592-2300

Winemaker: Maitland Finley

Brilliant aromatics characterize the wines made from grapes under these conditions – and a freshness on the palate which seems a natural extension of the climate and food native to our region. Appellation winemakers draw the best from the most ideal grapes for the region: from soft to crisp, from bone-dry to sweet, from even-tempered to floral and spicy, the SIEGERREBE, MADELEINE ANGEVINE, MULLER-THURGAU, CHASSELAS, ISLAND BELLE, PINOT GRIS, PINOT NOIR express a characteristic Puget Sound clarity. Each is a perfect accompaniment to any occasion featuring local food: grilled salmon, oysters, steamed mussels, fresh cracked crab, bread and cheese.



The Puget Sound Appellation

Average rainfall for Seattle: 37 inches. Temperature: Jan 25-57, July 51-86
San Juan Islands: 25 inches. Temperature Jan 34-44, July 50-70

Out here on the edge of the continent, a lot of applied research goes on. The Puget Sound Winegrowers work closely with Washington State University's Agricultural extension. Experimental plantings of red-wine grapes with unfamiliar names will bear enough fruit this year to make the first wines. In the next five years you will see such wine names as Agria, Regent, Dornfelder and St. Laurent, full of the flavors of grape and terroir, on your local shelves.

For more information contact any member winery or www.psuw.org.



Wines of Washington's

puget sound appellation